

# SWAGE SLEEVE

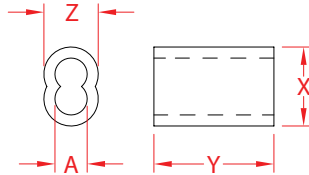
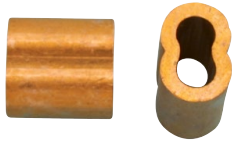
## COPPER



Made in  
USA



Precision  
Machined



ITEM	A (wire / wire mm)	CRIMPS	HOLE #	X (height)	Y (length)	Z (width)	WT (lb)	PACKAGING TYPE	EACH (qty)	INNER (qty)	CARTON (qty)	UPC
K0752-0001	1/16" - 1.5 mm	2	1	0.25"	0.37"	0.17"	0.01/100	POLYBAG	1	10	1,000	791506018902
K0752-0002	3/32" - 2.5 mm	3	2	0.37"	0.40"	0.22"	0.6/100	POLYBAG	1	10	1,000	791506018919
K0752-0003	1/8" - 3.0 mm	3	3	0.49"	0.55"	0.33"	0.01	POLYBAG	1	10	1,000	791506010074
K0752-0004	5/32" - 4.0 mm	3	4	0.59"	0.61"	0.37"	0.02	POLYBAG	1	10	1,000	791506018926
K0752-0005	3/16" - 5.0 mm	3	5	0.67"	0.94"	0.45"	0.05	POLYBAG	1	10	500	791506018933
K0752-0007	1/4" - 6.0 mm	3	1	0.81"	1.11"	0.52"	0.07	POLYBAG	1	10	500	791506018940
K0752-0009	5/16" - 8.0 mm	3	HYDRAULIC	1.02"	1.05"	0.67"	0.11	POLYBAG	1	5	200	791506018957
K0752-0010	3/8" - 9.0 mm	3	HYDRAULIC	1.11"	1.27"	0.73"	0.15	POLYBAG	1	5	200	791506018964
K0752-0013	1/2" - 12.0 mm	3	HYDRAULIC	1.47"	1.89"	0.96"	0.37	POLYBAG	1	1	75	791506018971

**NOTE:**

**FOR 1/16" - 1/8", USE E0113-0350. FOR 1/16" - 3/16", USE E0113-0600. FOR 1/4" USE E0113-0700. USE A HYDRAULIC SWAGER ON LARGER SIZES. ALL DIMENSIONS ARE NOMINAL (+/- 3%) AND ARE SUBJECT TO CHANGE WITHOUT NOTICE.**